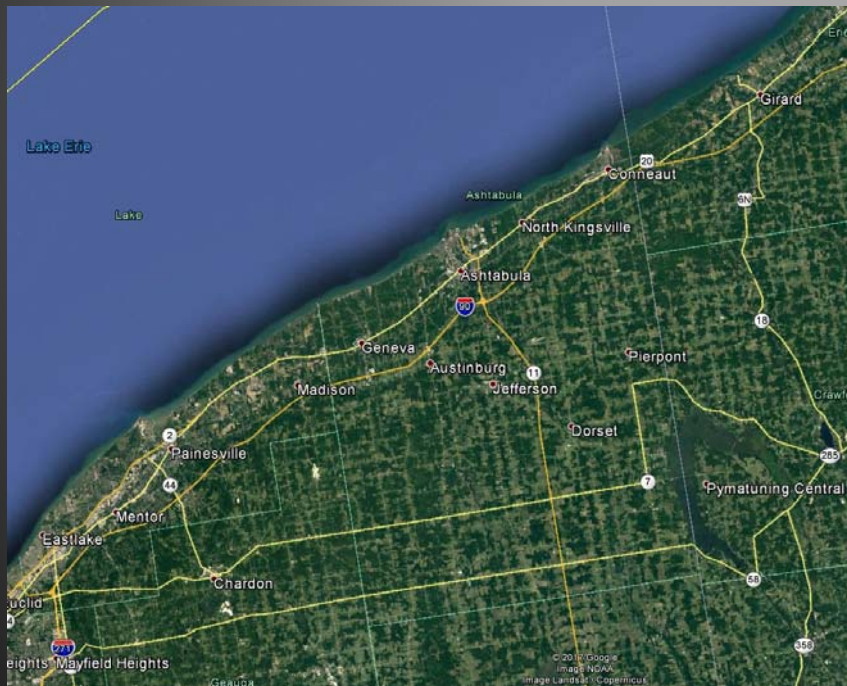




Update on Hydrilla Management at Pymatuning Reservoir >>

Pymatuning Reservoir



Google Earth Image

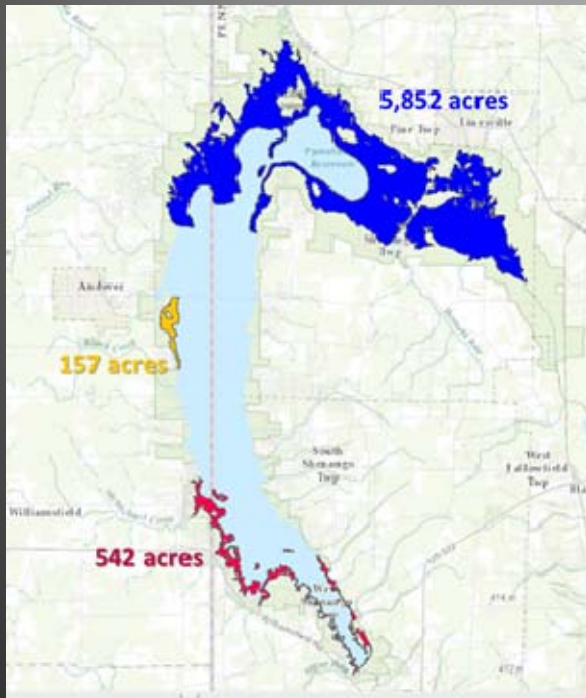
- ▶ 17,088 acre reservoir
- ▶ Average depth ~15ft
- ▶ Max Depth ~ 30ft
- ▶ PFBC Linesville State Fish Hatchery
- ▶ ODNR and DCNR Pymatuning State Park
- ▶ PGC Pymatuning Wildlife Management Area

Significance of Pymatuning Reservoir

- ▶ 3.1 million visitors annually
- ▶ Top 10 Family Fishing Destination – Game and Fish magazine
- ▶ Top 100 Best Bass Lakes – 2014 Bassmasters.com
- ▶ Highest Revenue producer of PA State Parks system
 - visitors spending more than \$83.8 million in 2010— spending that directly resulted in more than \$78.3 million in commercial sales, creation of 1,178 jobs – “Economic Significance and Impact of Pennsylvania State Parks”
- ▶ Approximately 20 miles from Lake Erie.



What is the potential impact?

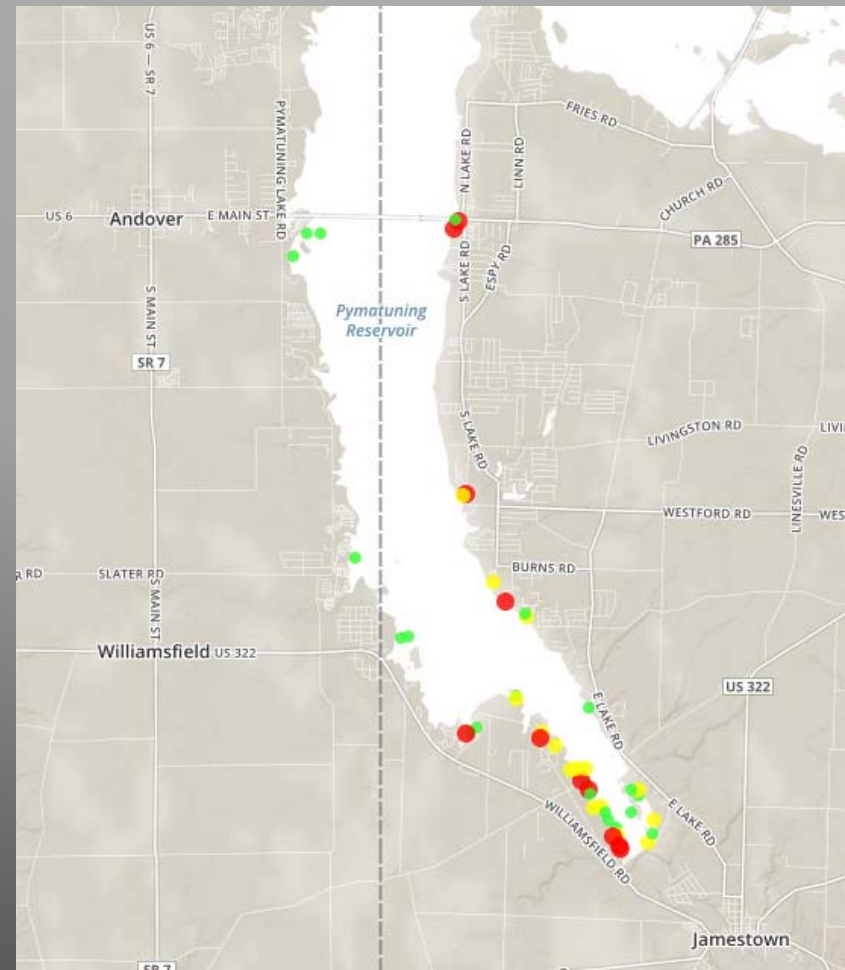


Courtesy of Dr. Mark Heilman-SePro Corporation

- ▶ Worst case scenario ~6000 acres of infestation.
- ▶ Loss of boating access and recreational opportunities.
- ▶ Potential reduction or loss of PFBC hatchery operations.
- ▶ Potential economic harm, both state and local.
- ▶ Potential source of infestation for the Great Lakes

Background on infestation

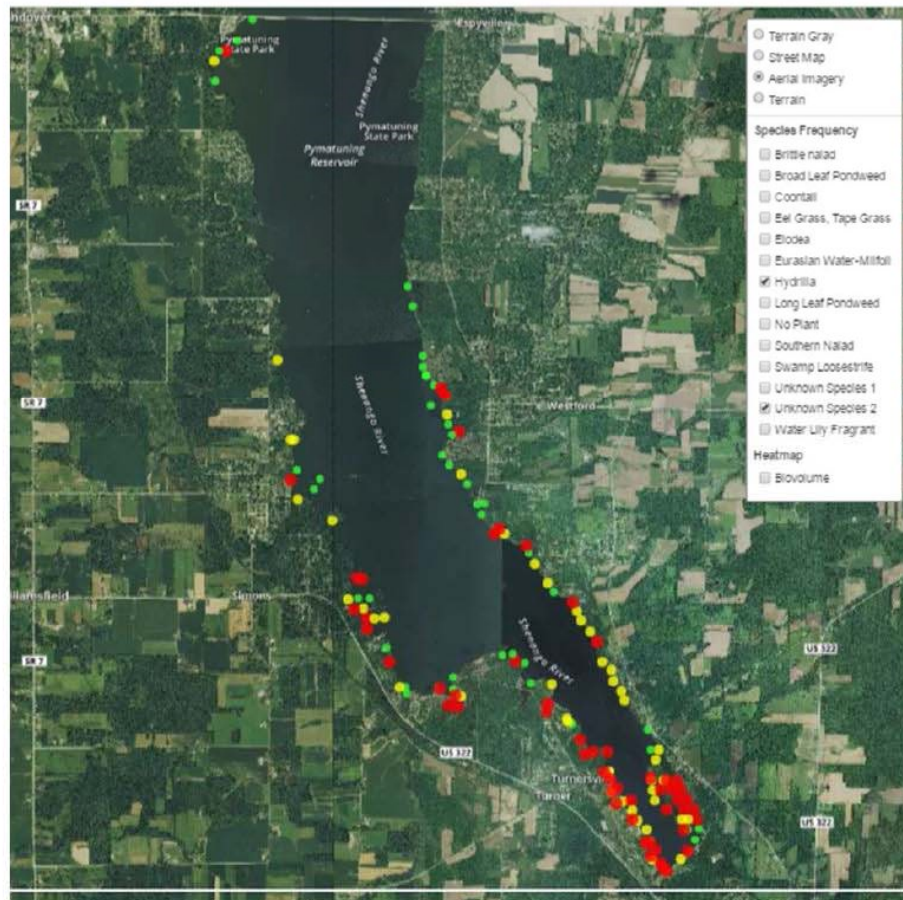
- ▶ Hydrilla discovered during a routine aquatic plant survey in 2010.
- ▶ Noticeable expansion in 2014 prompted an effort to coordinate a response.
- ▶ First detailed survey conducted in August 2015.
- ▶ First coordinated treatments conducted by DCNR, ODNR, CCCD in 2016.
- ▶ Second survey conducted on the south end August 2016



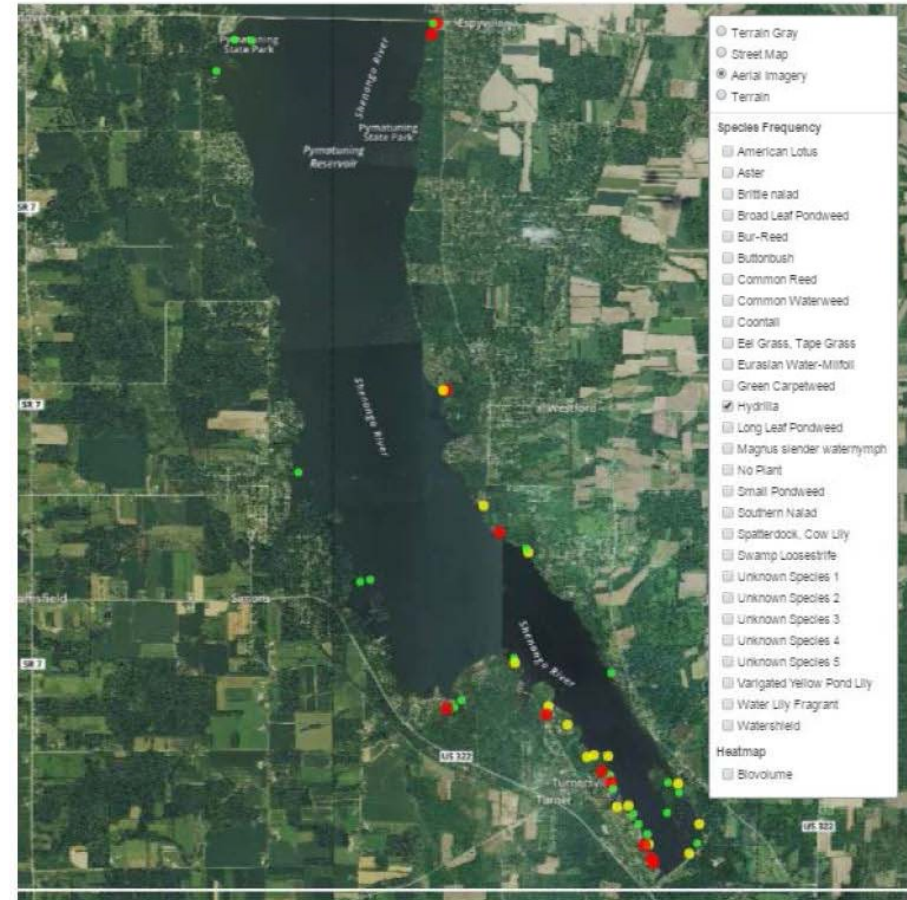
2015 Pymatuning hydrilla survey results
University of Florida – Dean Jones

Where are we now?

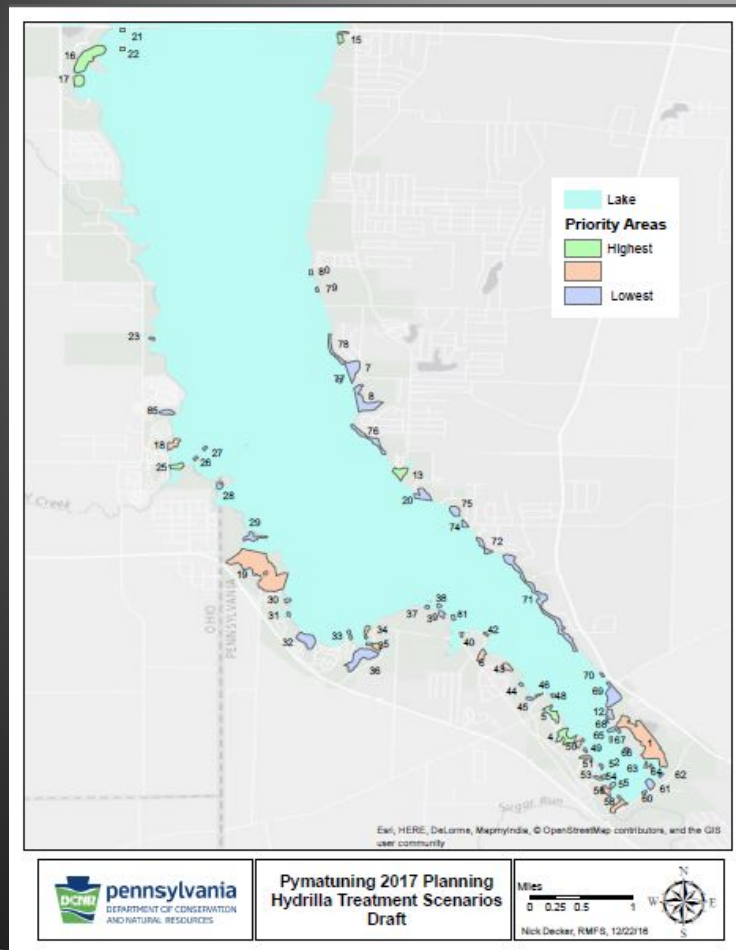
2016 Hydrilla – Frequency 28.0%



2015 Hydrilla – Frequency 10.9%



Future treatment potential



- ▶ Based on the 2016 survey there is a potential to treat up to 250 acres (if we had the funding and premiting approval).
- ▶ Results of 5/17 dye test were not encouraging. Flushing rate in most sample treatment blocks was much higher than expected.
- ▶ Helped explain our mixed 2016 treatment effectiveness
- ▶ Poses a challenge for 2017 and future treatments.

2017 and Beyond

- ▶ Flushing rates have caused us to regroup a bit for 2017
- ▶ Permitting roadblocks
 - Fluridone not approved for 2017
- ▶ Funding shortfalls
- ▶ Learning curve
- ▶ Manpower shortage



8/16 Pymatuning Reservoir Mooring area B

Pymatuning SP Pilot Check Station Program

2016

Pymatuning State Park

Pilot

Invasive Species Courtesy Boat
Inspection Stations



Handbook for Inspection
Stewards



Stacie Hall-PA DCNR

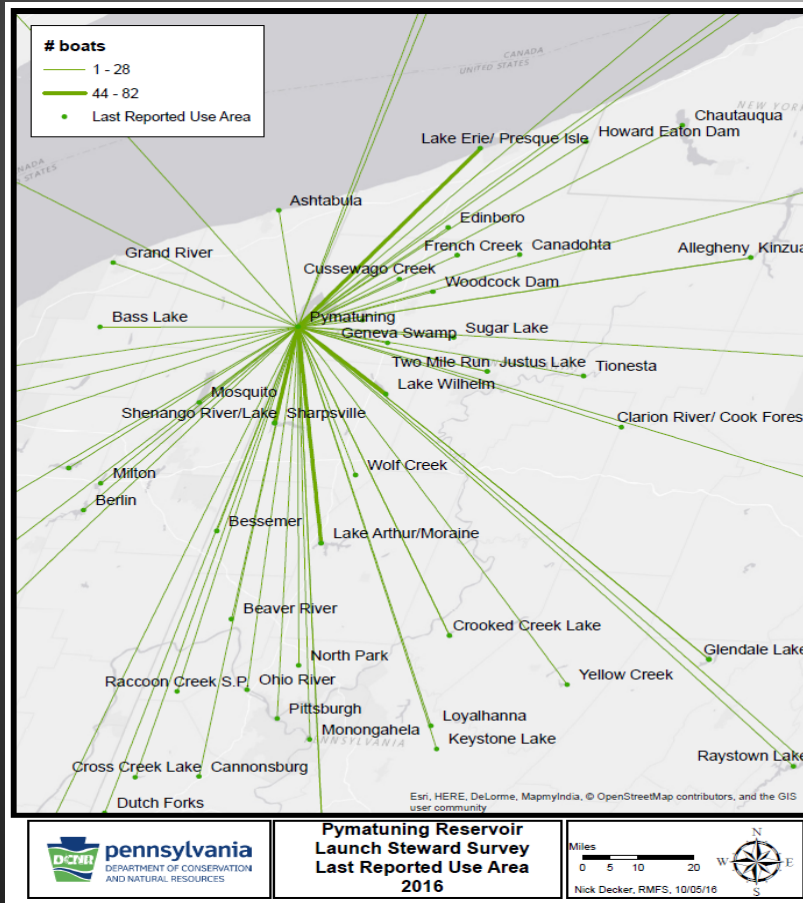
First full season resulted in 2,181 Surveys

- ▶ Aquatic Species were removed from 148 boats (7% of those checked)
- ▶ Majority with species found were a split between motor and pontoon– 1 canoe and 1 kayak
- ▶ Species removed– Eurasian Watermilfoil, Elodea, Curly-leaf Pondweed, Vallisneria, Zebra Mussels*, and Cabomba*

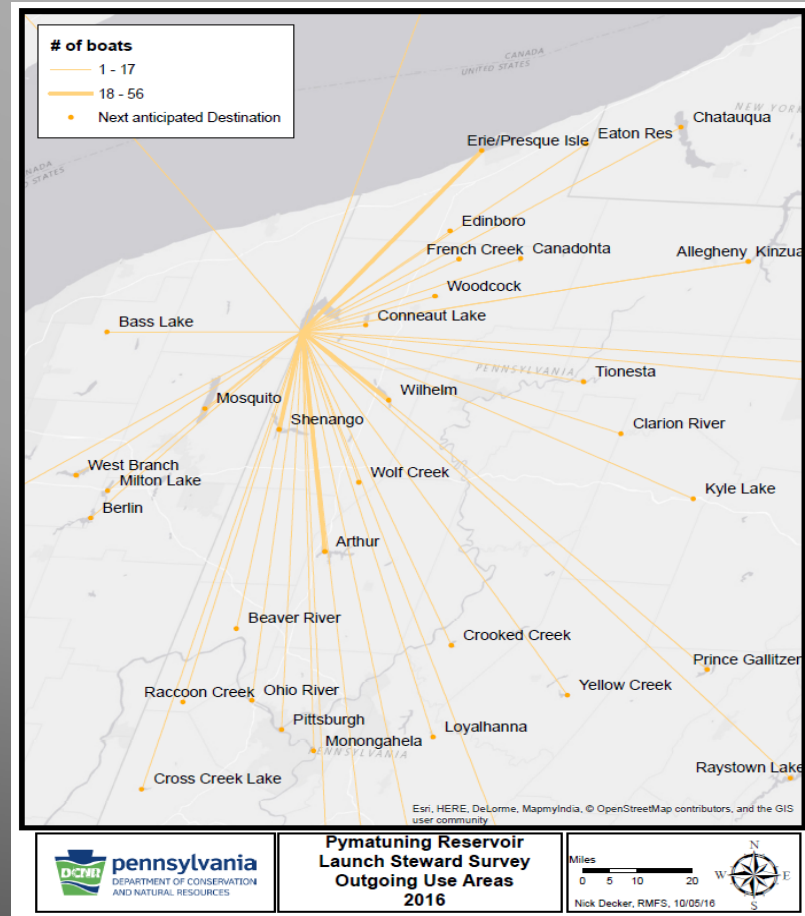
*not currently found in Pymatuning



82 Locations of where boats were used last
 Top 3 after Pymatuning: Lake Arthur, Lake Erie, and Lake Wilhelm



55 Locations of where they may go next
 Top 3 after Pymatuning: Lake Arthur, Shenango Lake, and Lake Erie



Inspected boats were registered to: Florida, Indiana, Kentucky, Louisiana, Michigan, Maryland, North Carolina, New York, Ohio, Pennsylvania, and West Virginia.

Brian S. Pilarcik
Watershed Specialist

brian@crawfordconservation.org

21742 German Road
Meadville, PA 16335
814-763-5269

www.crawfordconservation.org

www.palakes.org