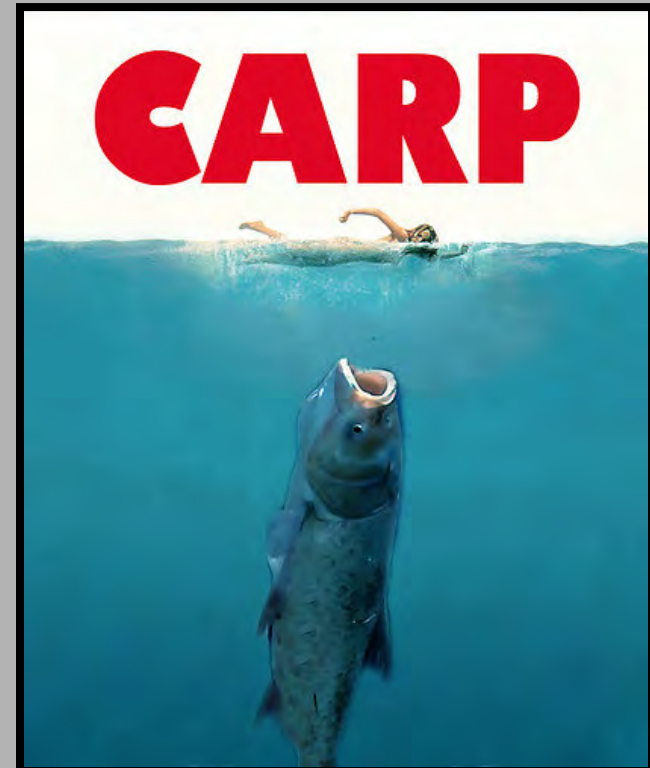
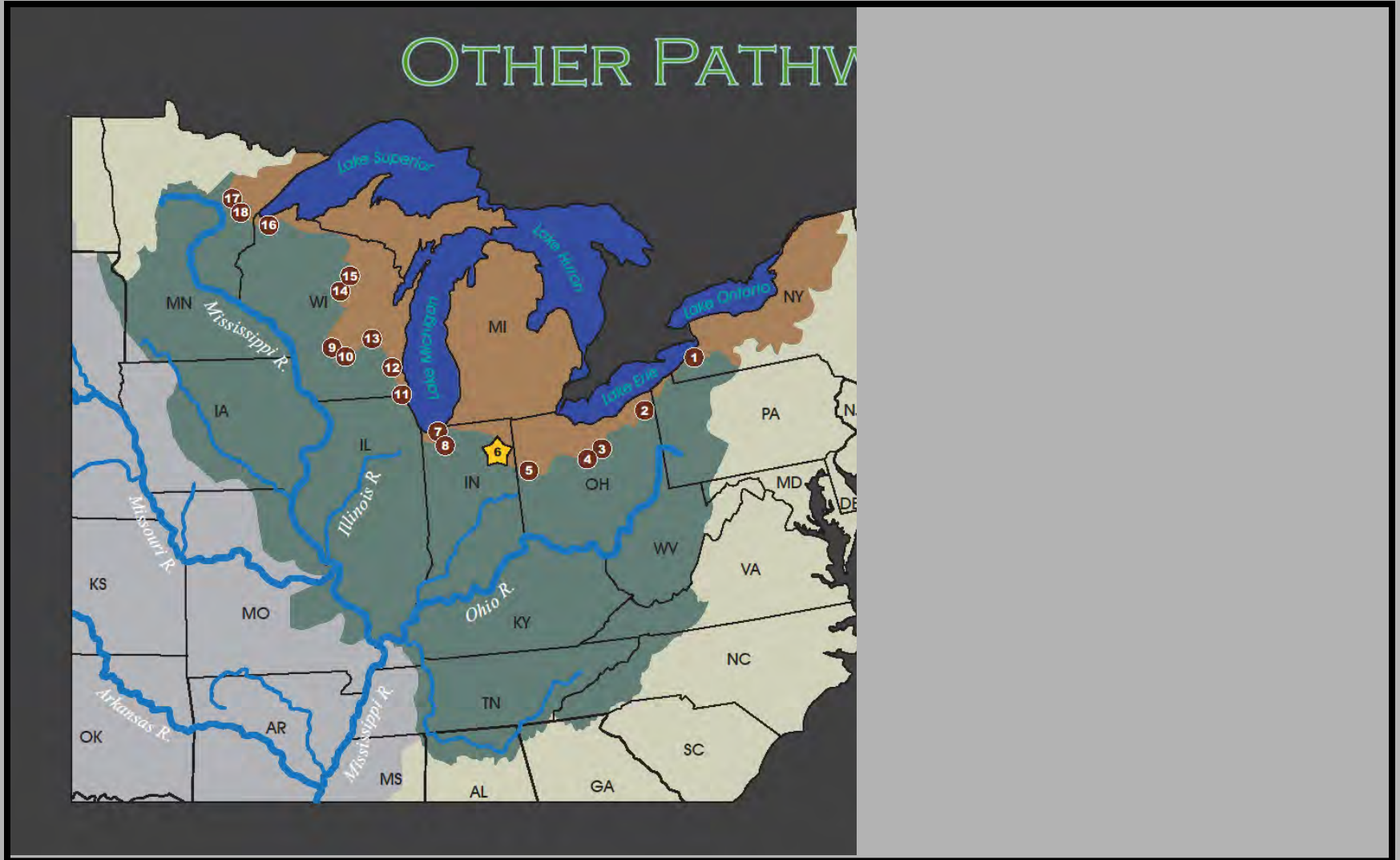


Ohio Asian Carp Tactical Plan

- Lake Erie watershed: not yet established
- Ohio River watershed: established
- Grass carp: separate set of problems
- Communication

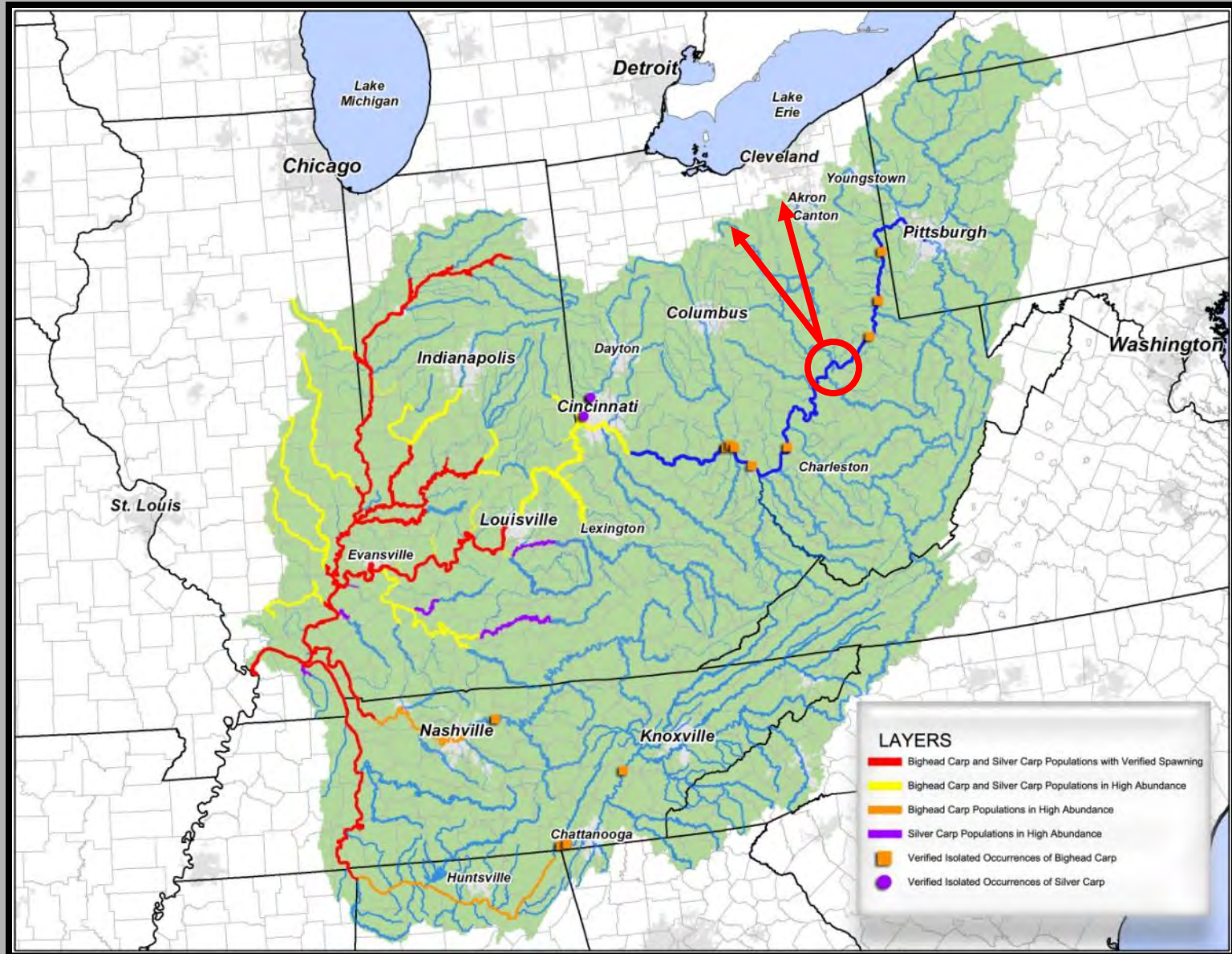


Great Lakes Mississippi River Interbasin Study (GLMRIS)

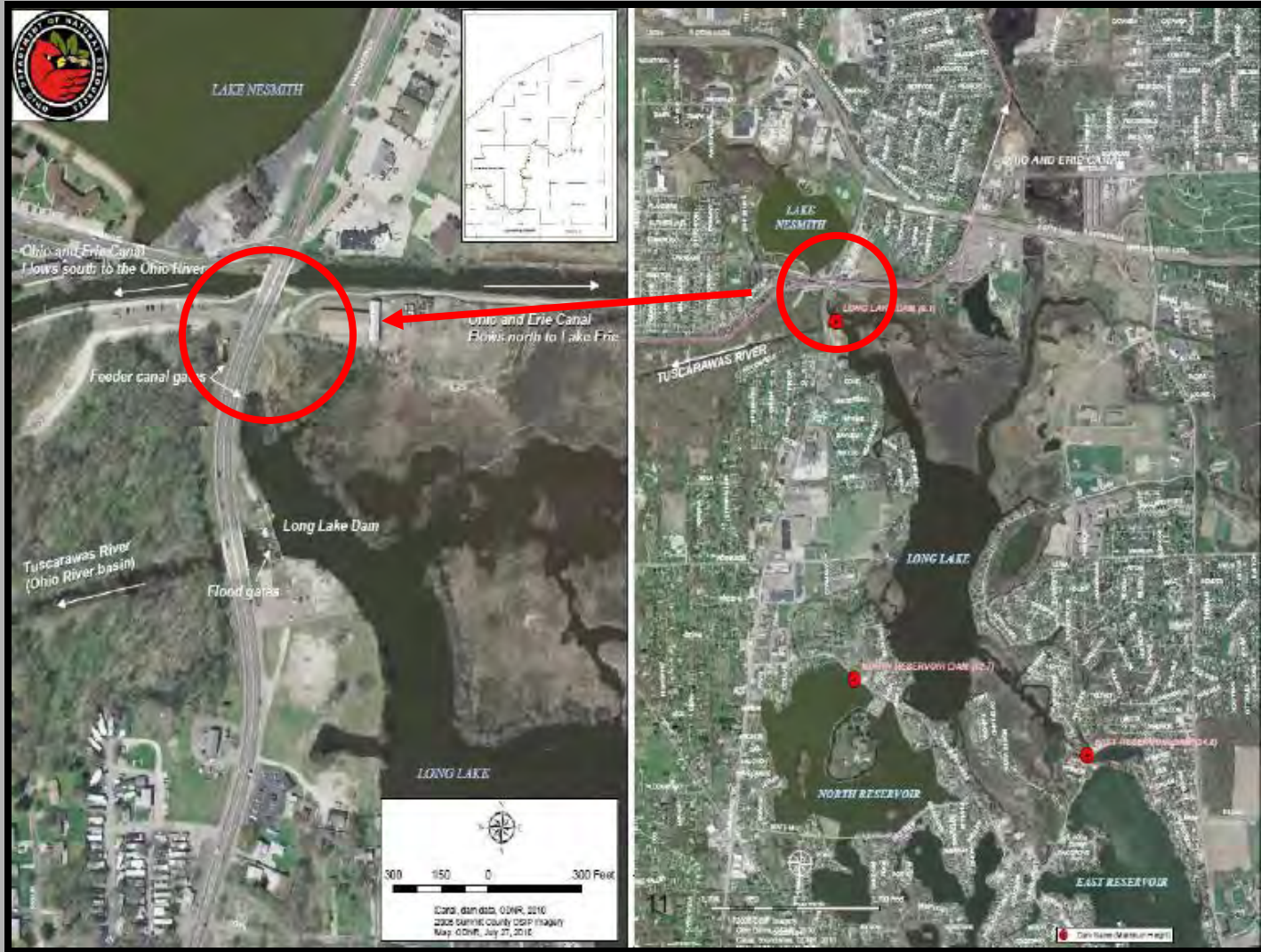


Muskingum River is Potential Conduit to Lake Erie

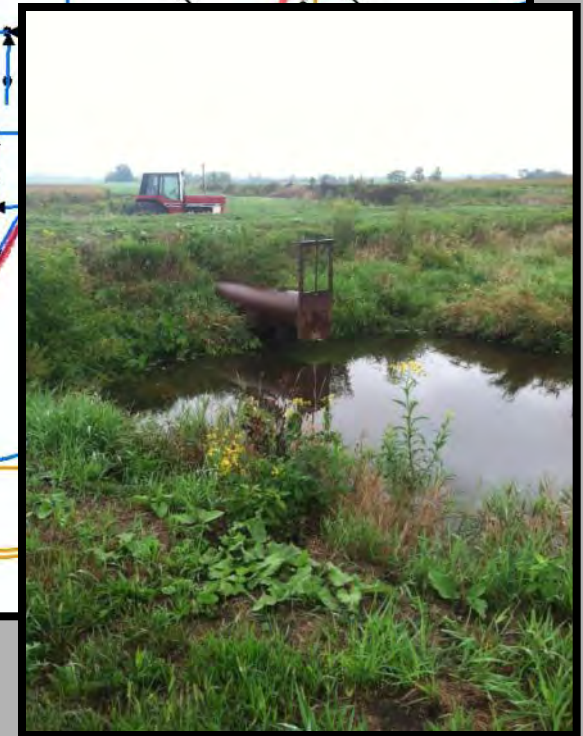
Asian carp threat to medium risk GLMRIS connections



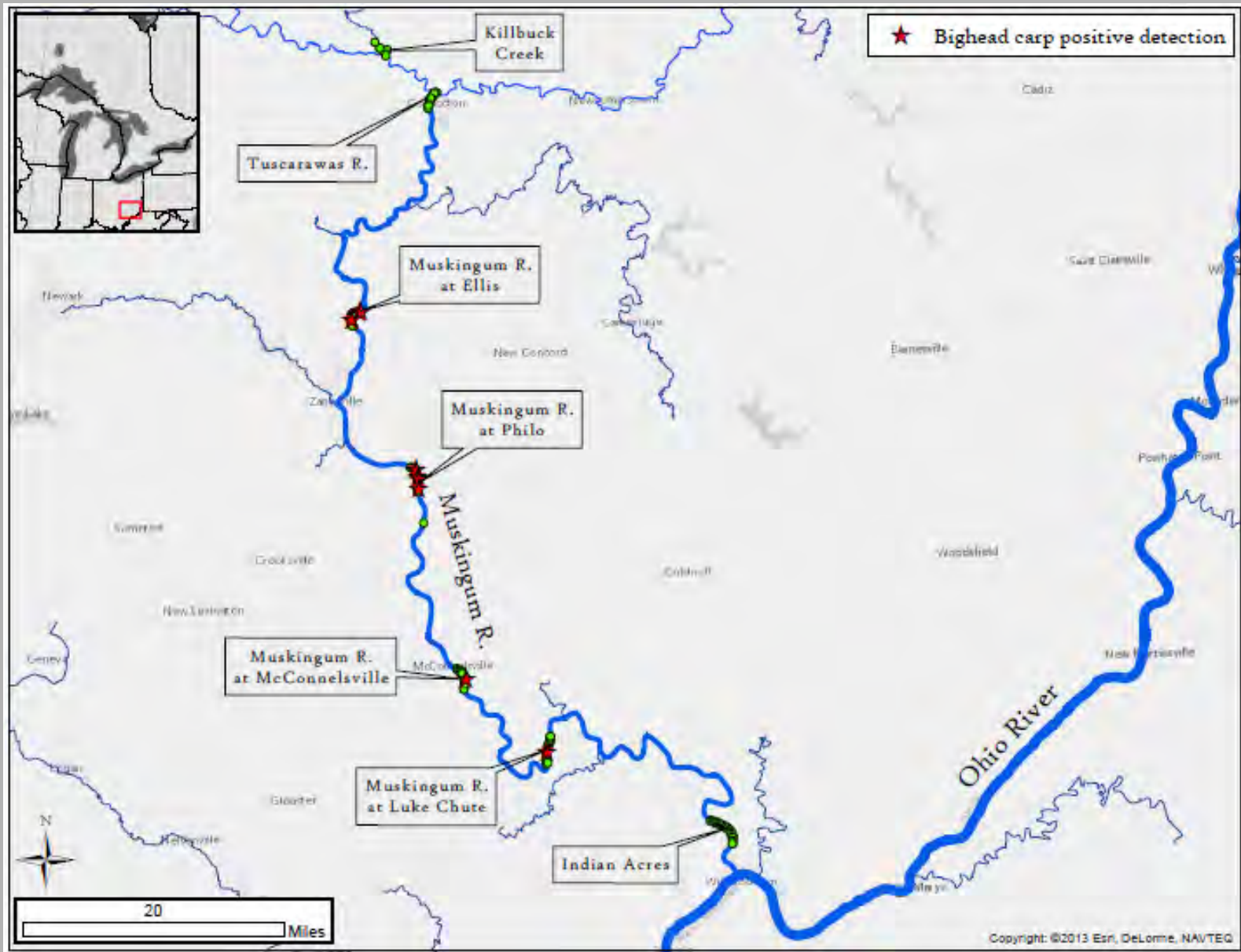
Ohio Erie Canal Summit County, Ohio



Little Killbuck Creek Medina County, Ohio



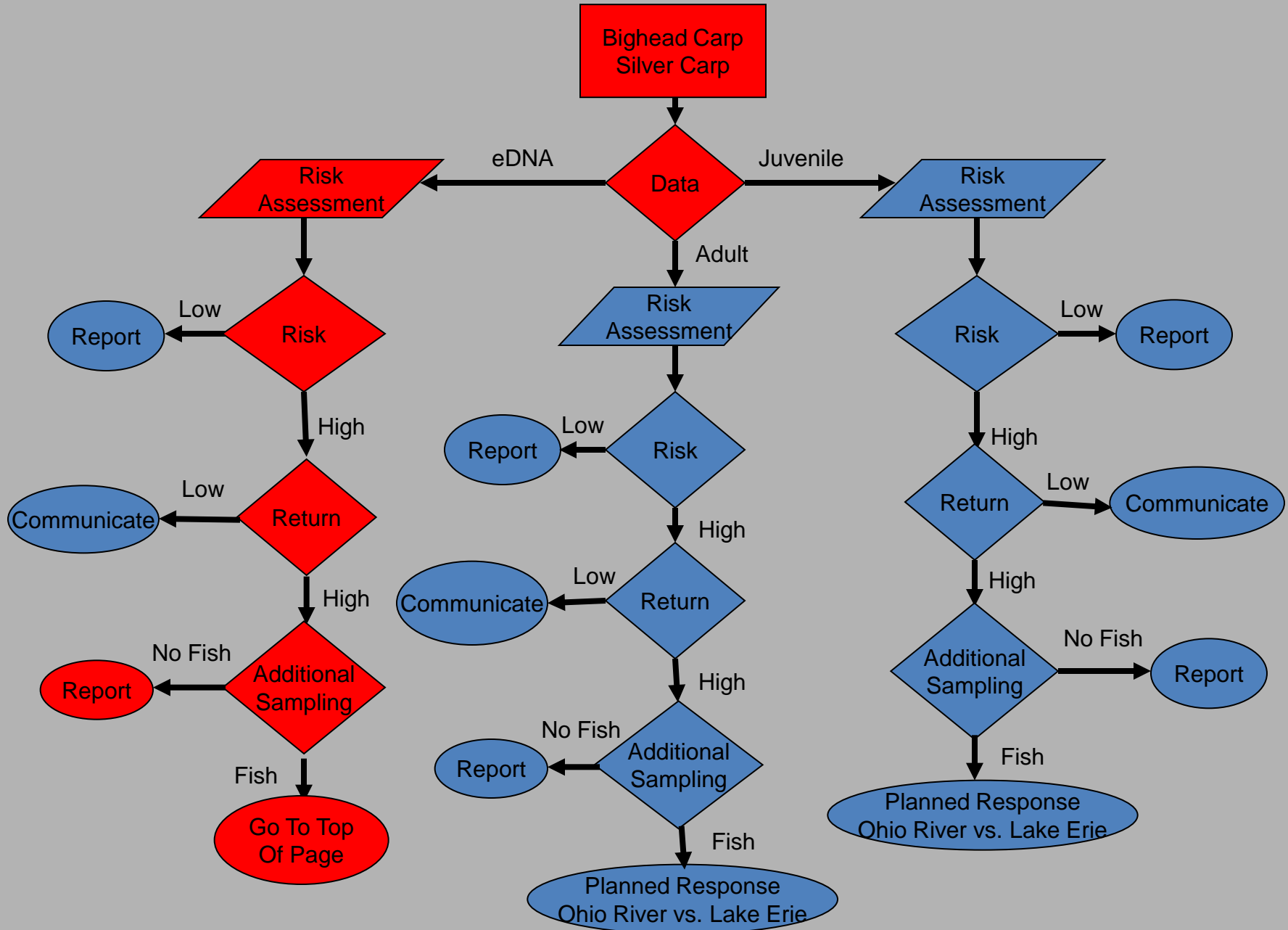
Muskingum River eDNA Sampling



Asian Carp Decision Matrix

Draft Asian Carp Matrix					
Risk (Threat to System) - Return (Ability to Eliminate Risk)					
Habitat	Risk		Return		Action Taken
	Low	High	Low	High	
Bighead/Silver Carp					
Ohio River Watershed					
eDNA					
Mainstem	X		X		Report
Tributaries	X		X		Report
Reservoirs	X		X		Report
Muskingum River*		X		X	Additional Sampling

Bighead/Silver Carp Assessment Flow Chart



Our Asian Carp Surveillance Tool Box

Reconnaissance tools available

1. Physical sampling
2. Monitoring commercial harvest
3. Public reporting

